

Specifications >>>



Telescope		Level vial sensitivity	
Length	156mm	Plate level vial	30"/2mm
Image	Erect	Circular level vial	8'/2mm
Objective aperture	Telescope:Φ45mm(meas.dist.:Φ50mm)	Laser plummet(Standard)*4	
Magnification	30×	Accuracy	±1mm/0.8m-1.5m
Field of view	1°30'	Spot size	≤2.0mm/0.8m-1.5m
Shortest focus distance	1.0m	Optical plummet(Factory Optional)	
Angle measurement		Accuracy	±0.8mm/1.5m
Reading system	Absolute encoder	Image	Erect
Angle unit	360°/400gon/6400mil, selectable	Magnification	3×
Display resolution	1"/5"/10"(or 0.2mgon/1mgon/2mgon)	Field of view	4°
Accuracy	2"	Focus range	0.5m to ∞
Distance measurement		Power	
Laser class(IEC60825-1)		Battery	5200mAh Li-ion Rechargeable
Reflectorless	Class 3R	Output voltage	7.4V DC
Reflective sheet/RP60	Class 3R	Continuous operation time	Approx.8 hours(At+20°C)
Prism	Class 1	Charging time(at +20°C)	Approx. 4 hours
Measurement range (Good condition)*2		Third Party software supported	
Reflectorless*3		Surpro 6.0	
Reflectorless	1 to 1000m	Others	
Reflective sheet/RP60	1 to 1200m	Display	5.5 inch; Resolution 720*1280
Single prism	1 to 5000m	CPU	4-core 64 bit ARM A55 CPU 2GHZ
Accuracy		Memory	4G RAM+32G ROM(8G+128G optional)
Prism	2mm+2ppm	Keyboard	15 keys under the display
Reflective sheet/RP60	2mm+2ppm	Interface USB /Type C/Bluetooth/WIFI/ RS-232C(4G module optional)Trigger key/ TF card/Voice output/Buzz output/RTC/	
Reflectorless	2mm+2ppm	Supported	
Measuring time		Screen backlight adjustment/ Temperature and air pressure sensor	
Fine mode	0.5s	Network (4G optional)	
Tracking mode	0.3s	System ANDROID 11.0	
Display resolution(m/inch selectable)	0.1mm/1mm	Water and dust protection IP55(IEC60529)	
Pressure input range	500hPa to 1500hPa(1hPa steps)	Operating temperature -20°C-+50°C	
Temperature input range	-40°C to +60°C(1°C steps)	Storage temperature -40°C-+55°C	
Prism constant correction	-99.9mm to +99.9mm		
Compensator			
	Dual-axis		
Range/Setting accuracy	±3'/1"		

* 1 Standard deviation based on ISO17123-3

* 2 Good conditions: no haze, visibility about 40km, no heat shimmer, breeze

* 3 Reflector: White side of Kodak Gray Card with 90% reflective * 4 Laser plummet mounted on the bottom of the vertical axis

Illustrations, descriptions and technical specifications are not binding and may change



Android Total Station
Creates More Possibilities



GUANGZHOU ALPHA GEO-INFO CO.,LTD
<https://alphageo-info.com>
 Mail :alphageo@aliyun.com
 Address : Building No.1,
 Gaopu Road No.68, Tianhe District,
 Guangzhou510630, Guangdong, China



Local Dealer:



ΑΠΟΚΛΕΙΣΤΙΚΗ ΔΙΑΘΕΣΗ
ΣΕ ΕΛΛΑΔΑ & ΚΥΠΡΟ

Ανω Τζουμαγιάς 36 Θεσσαλονίκη
www.recap-survey.com
 2310 949010 & 210 2601625

ALPHA Y

Product Feature >>>



Intelligent operating system

Android 11 system with open platform and strong scalability, which can customize APP according to the needs of different industries

Strong performance, smooth operation

Equipped with quad-core processor, ARM Cortex-A55 architecture, can clocked up to 2GHz

Variety of communication modes

Bluetooth, wifi, USB disk, Type-C, 4G full network (optional)

Extra memory and storage

4G RAM+32G ROM (expandable 8G+128G), running smoothly without lag

HD large screen

720P HD 5.5-inch large screen, 1280*720 high resolution, clearly visible in strong light

Super endurance, efficient intelligence

Large capacity battery and intelligent power management support long working time and single and double side switching display

Advanced angle measurement system

Design of CCD array angle measurement system to effectively eliminate system errors

Multifunctional android measurement software

The new Android measurement software Surpro6.0 with rich measurement programs, easy to complete the internal and external business measurement

Convenient and fast data transfer

Easily import and export Csw/txt/dat files, support CAD drawing import, CAD lofting, and OTA upgrade

Graphical stake out, clear at a glance

Supports CAD graphics stake out, making stake out more efficient

4G full network connectivity

High precision handwheel

Image assisted measurement

Trigger Key

Rich data communication interface



Building construction Stakeout

Installation of glass curtain wall

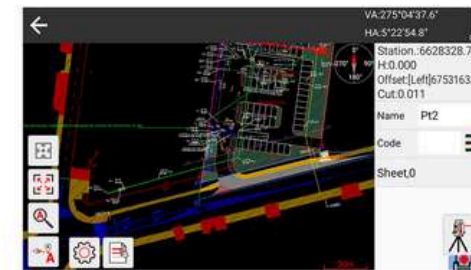
Tunnel survey

Protection of Ancient Buildings

Measurement of Irregular buildings

Topographic survey

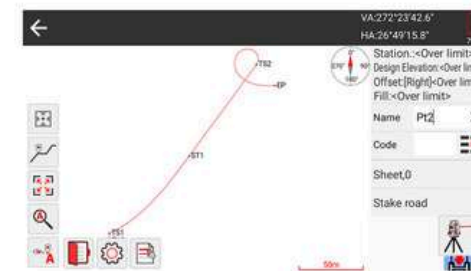
Software Interface >>>



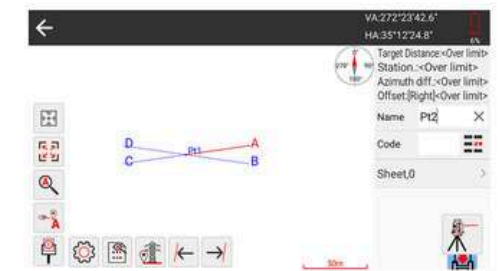
CAD Stakeout



CAD Mapping



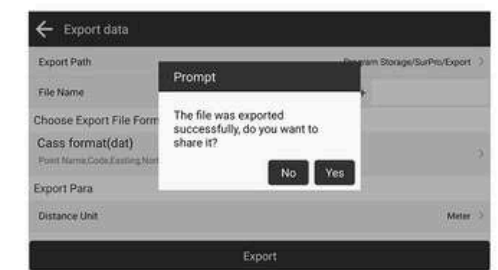
Road Stakeout



Tower Stakeout



Point Stakeout



Data Share